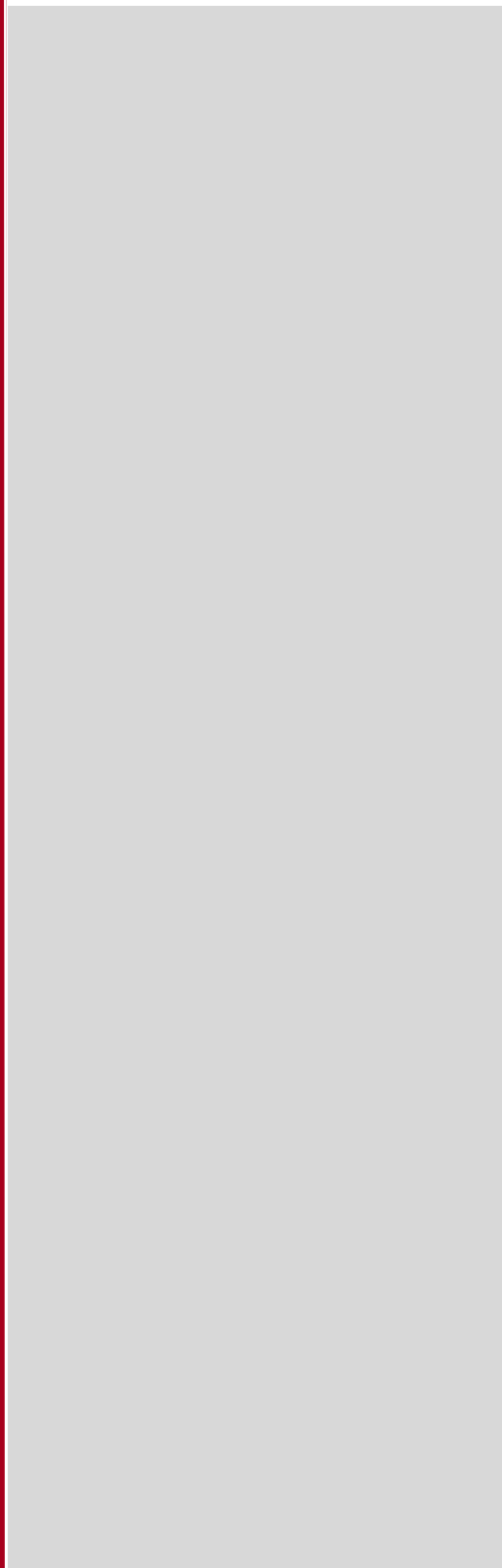
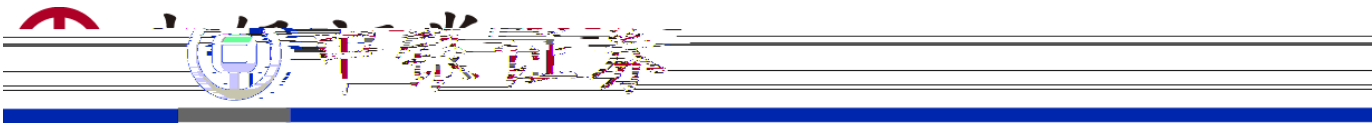


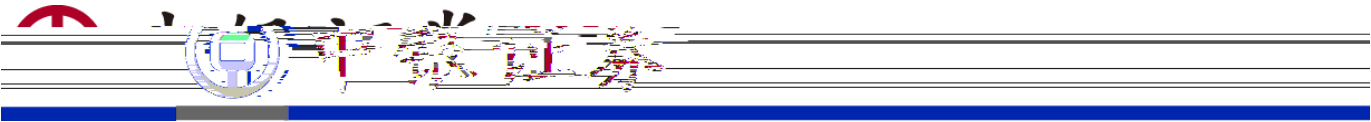


中銀證券





:	7
	7
	8
	9
	11
	13
	14
	14
	16
	18
	19
	22
	24
	28
	28
	30
	32
	35
	35
	36
	38
	40
	40
CBD	42
	45
CCUS	46

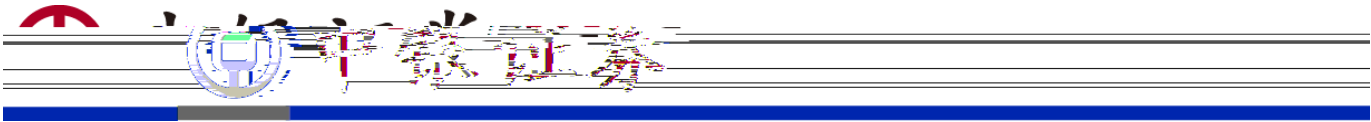


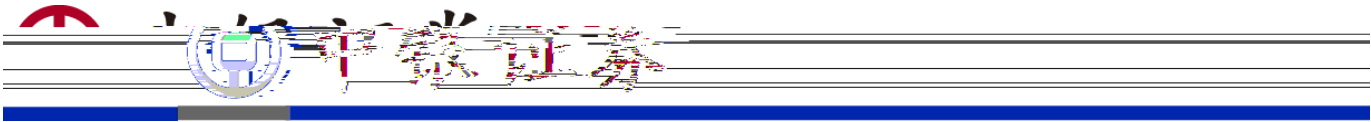
..... 49

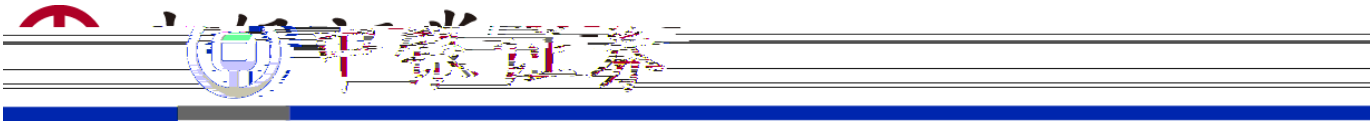
.....49

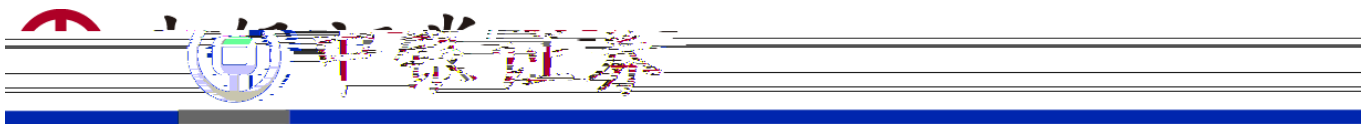
.....49

..... 51

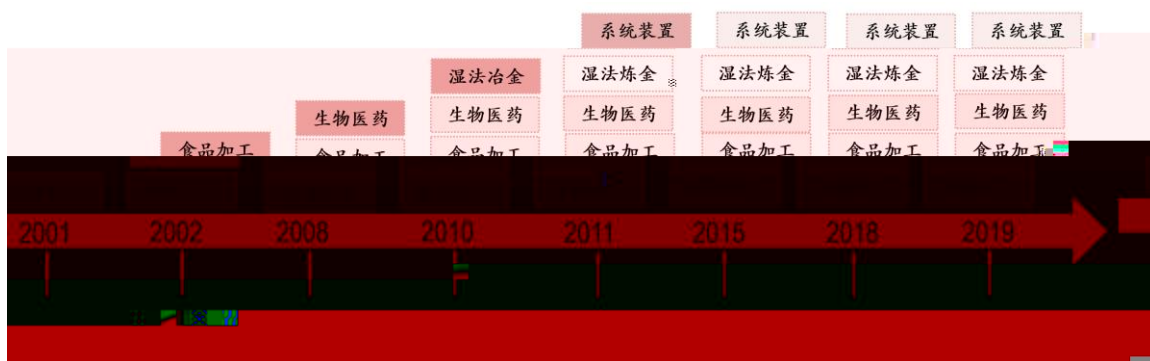


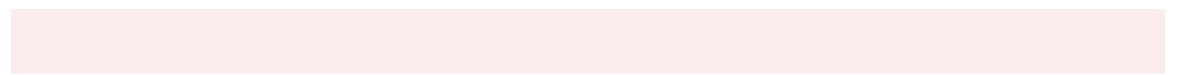
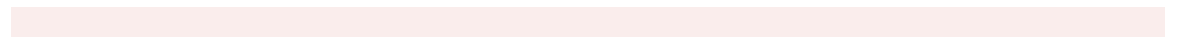
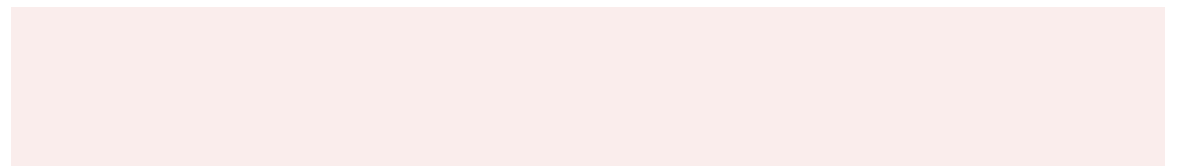
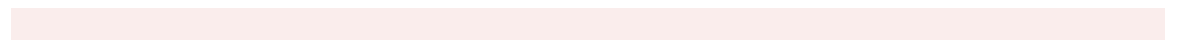
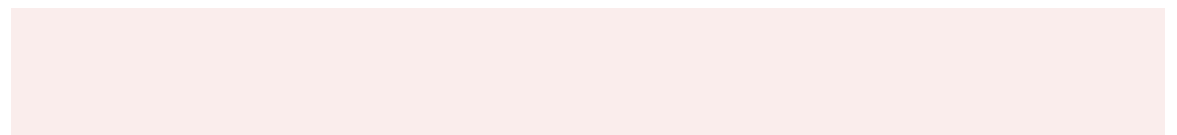
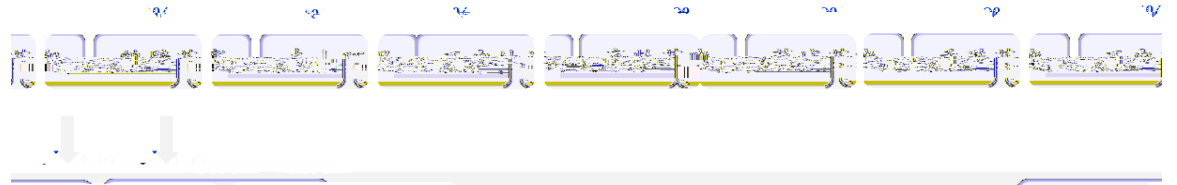
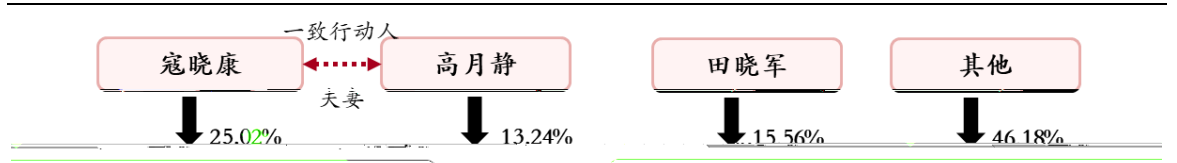
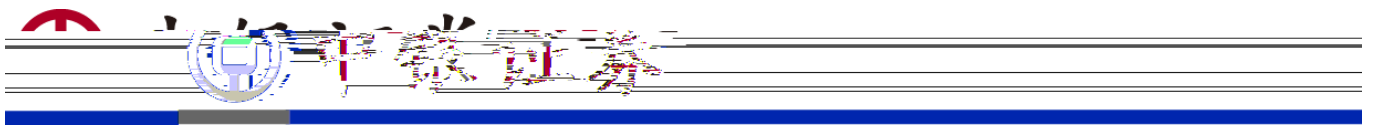






：

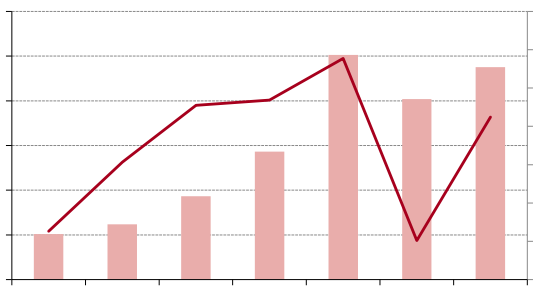
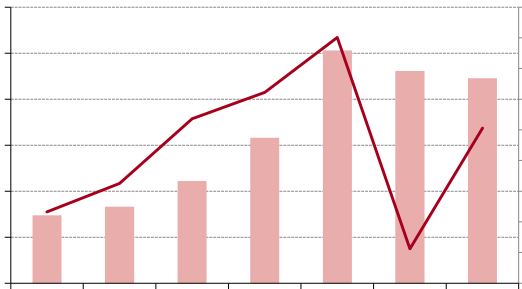




[Redacted text block]

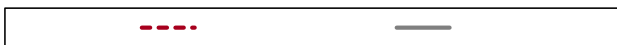
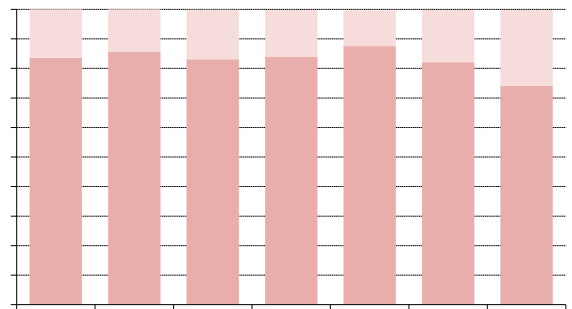
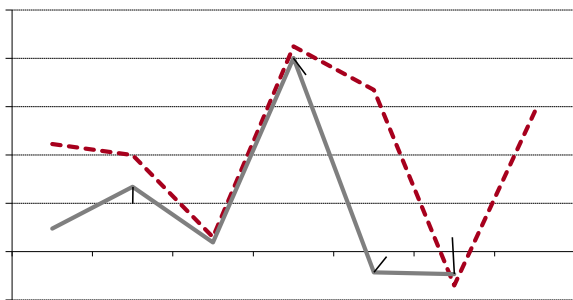
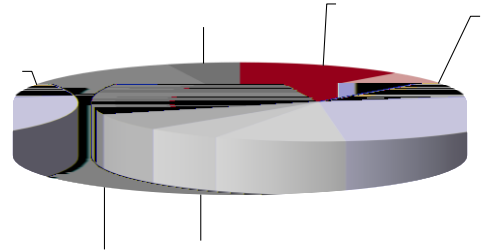
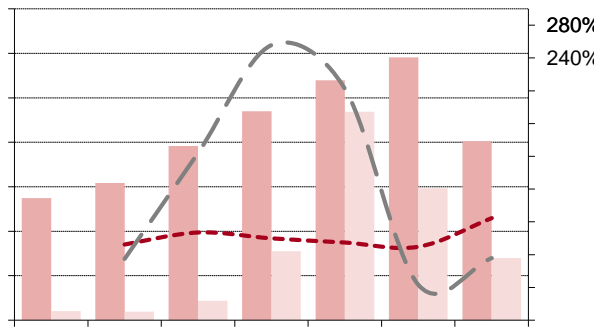
[Redacted text block]

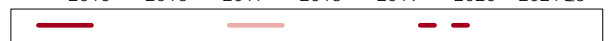
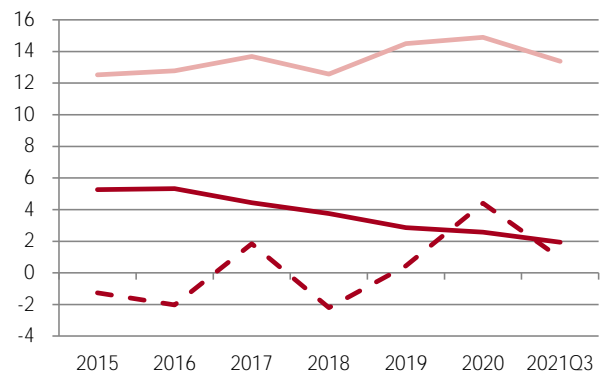
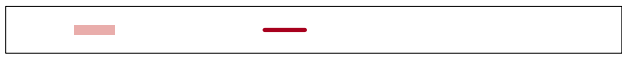
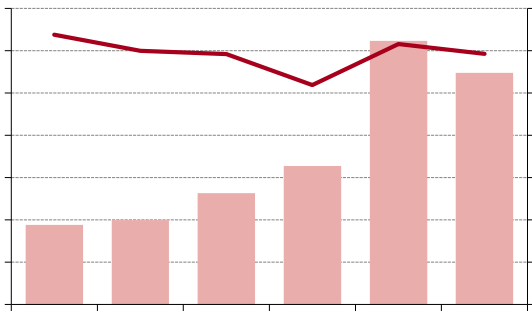
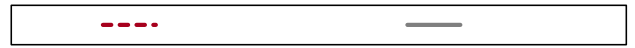
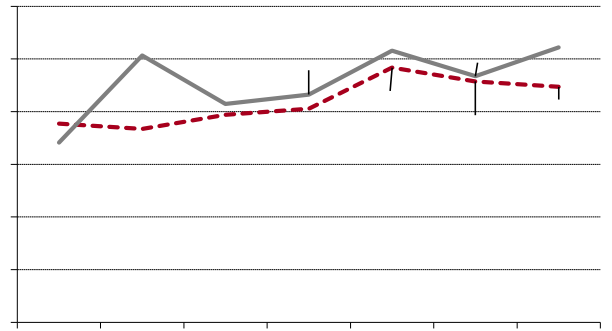
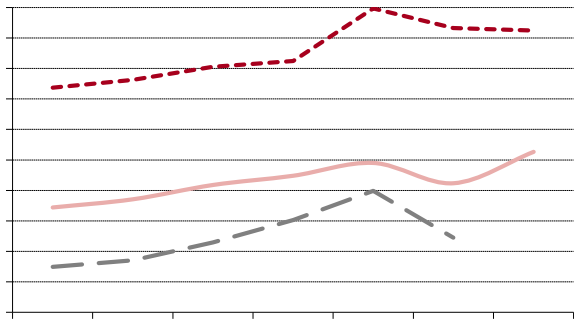
[Redacted text block]



[Caption box for the first chart]

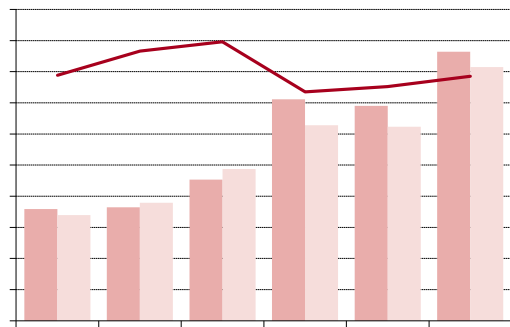
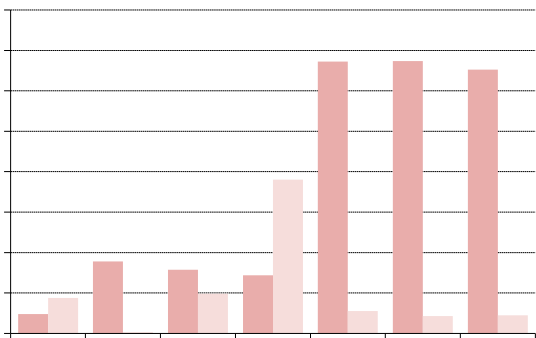
[Caption box for the second chart]





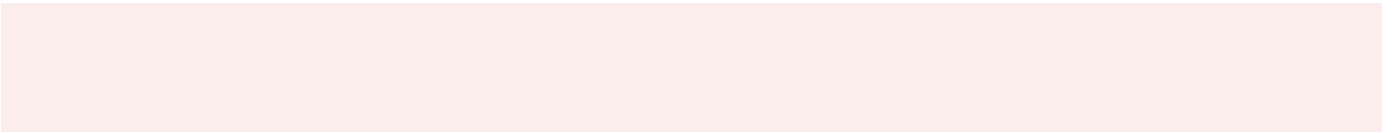
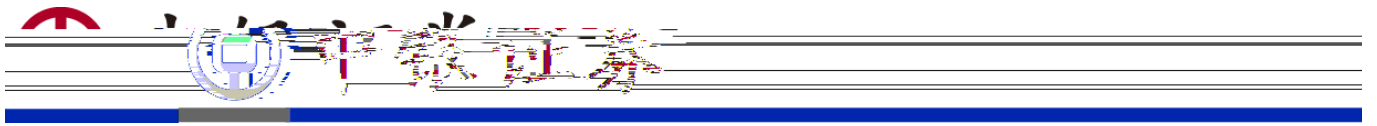
Three horizontal light pink bars, likely representing a title or subtitle area.

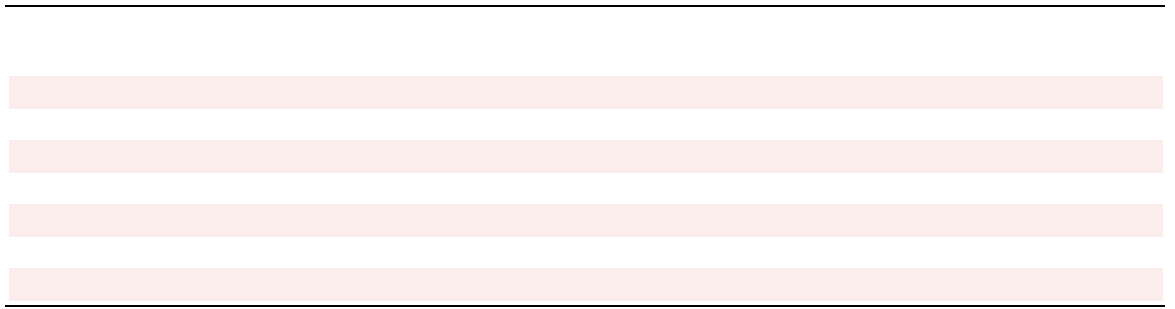
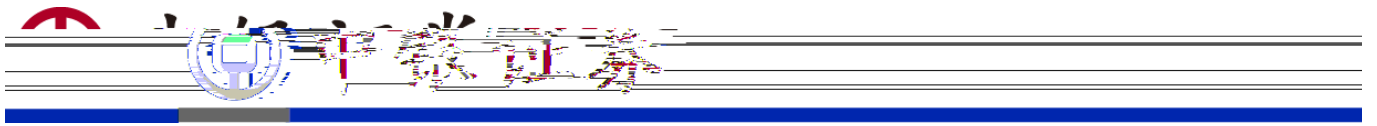
A wide horizontal light pink bar, likely representing a main title or section header.



Legend for the first bar chart, showing two colored squares (darker red and lighter red).

Legend for the second bar chart, showing two colored squares (darker red and lighter red) and a red line segment.

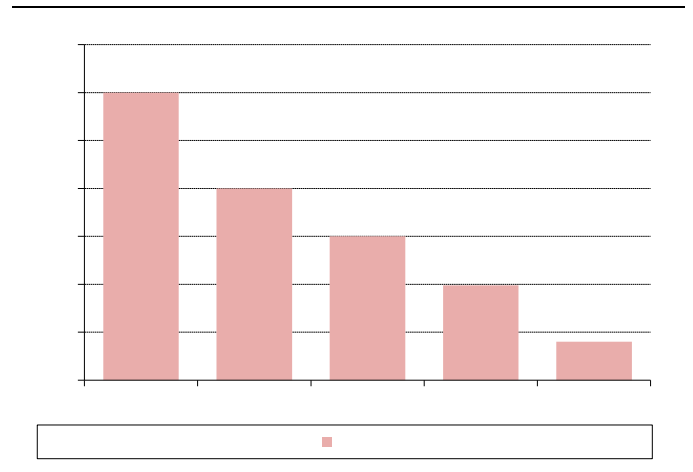
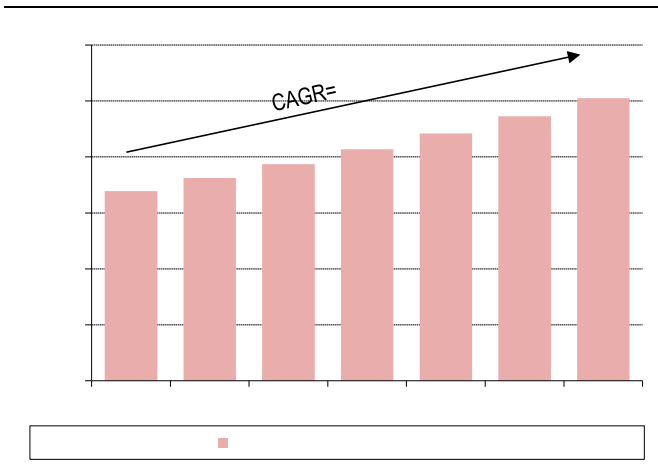
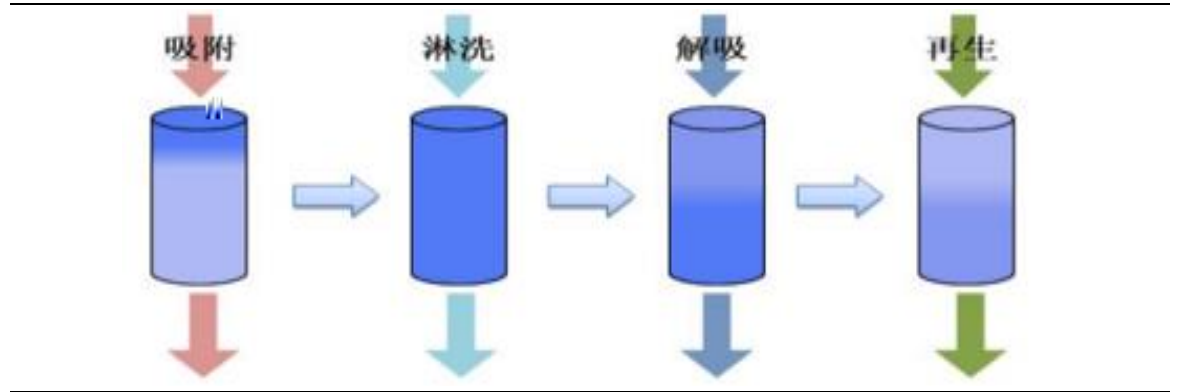
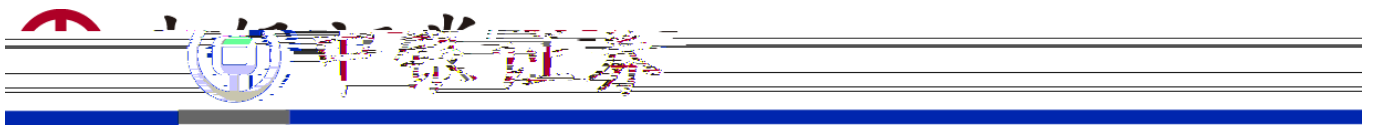


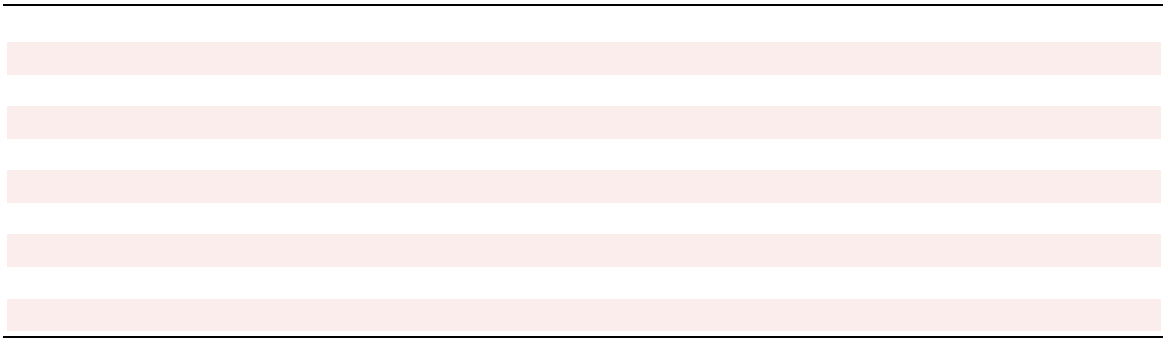
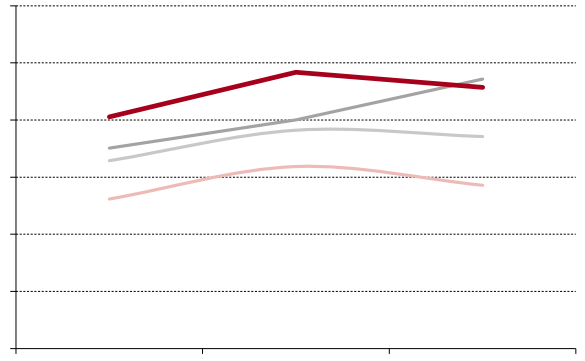
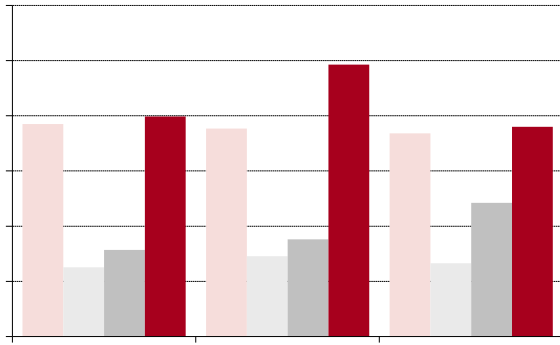
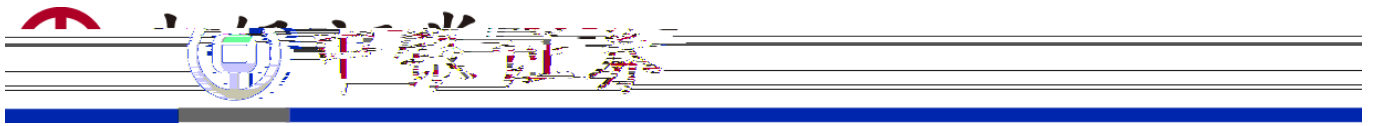


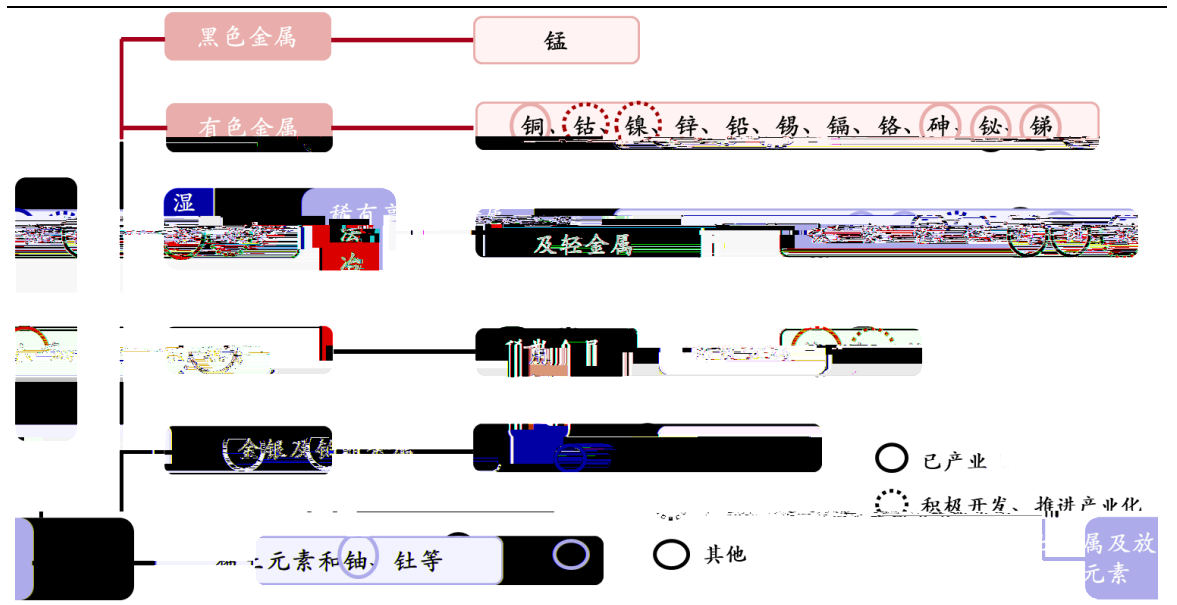
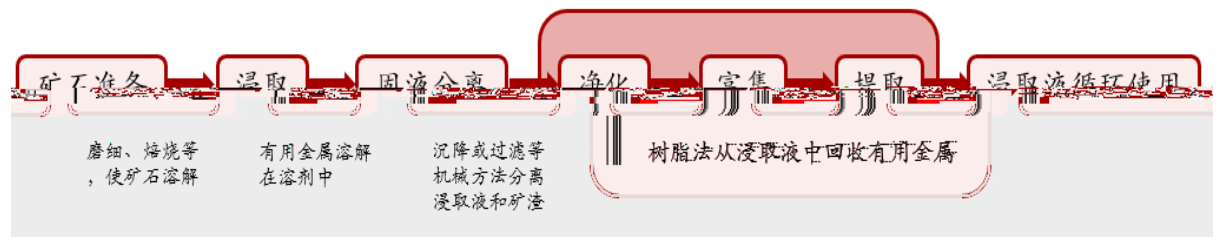
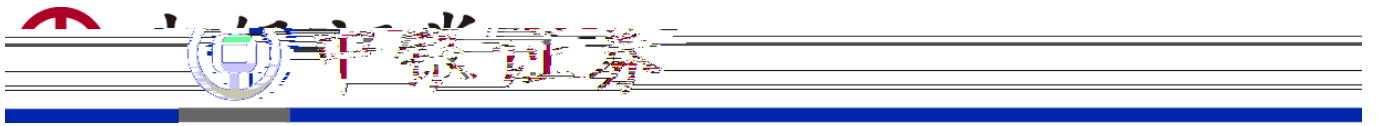
离子交换树脂：应用领域例如硬水软化 吸附树脂：应用领域例如污水处理、生物医药等

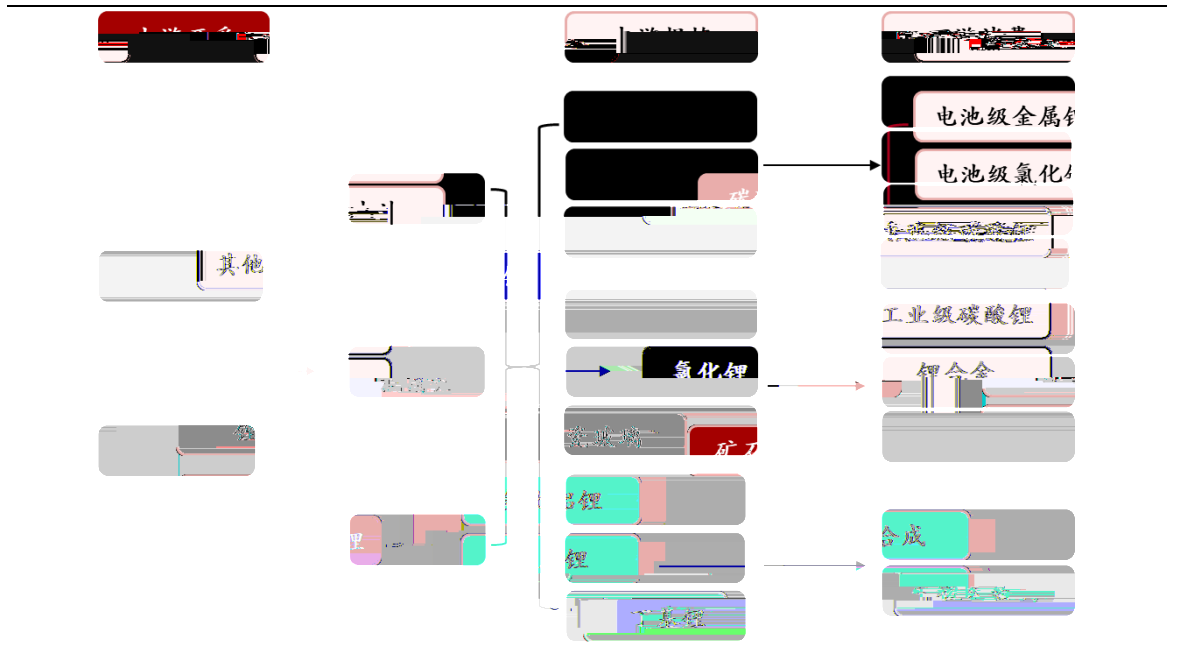
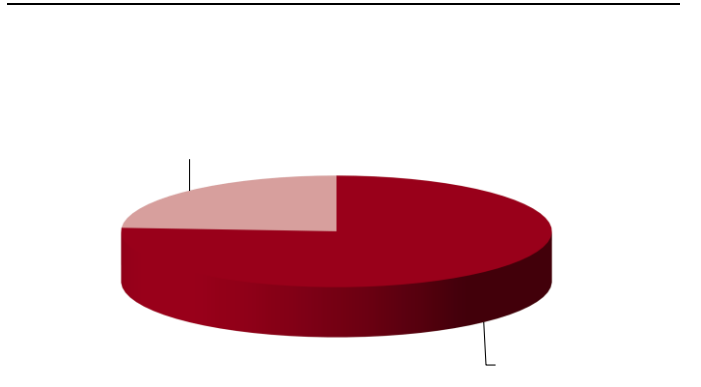
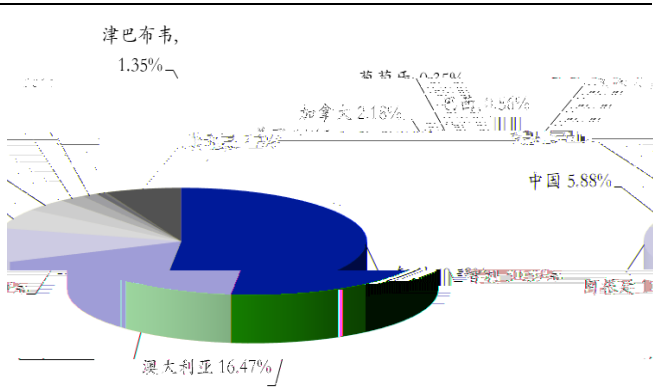
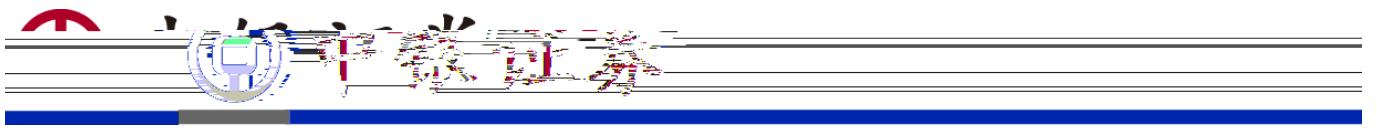
主要应用于医药领域 螯合树脂：应用领域例如湿法冶金等 酶载体树脂：

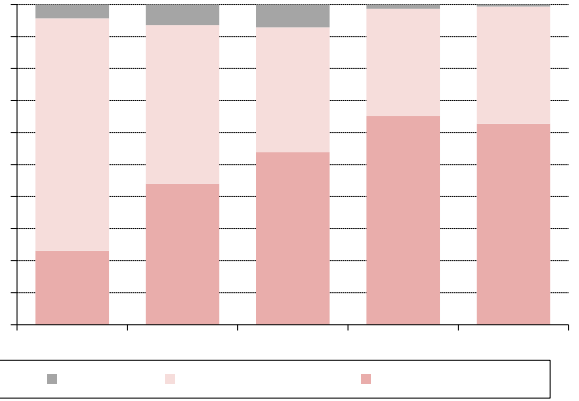
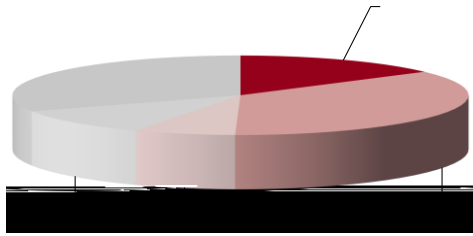
Three diagrams illustrating resin applications. The left diagram shows a cross-section of a resin bead with a blue sphere and a red sphere inside, representing ion exchange. The middle diagram shows a cross-section of a resin bead with a blue sphere and a red sphere inside, representing chelation. The right diagram shows a cross-section of a resin bead with a blue sphere and a red sphere inside, representing enzyme immobilization.



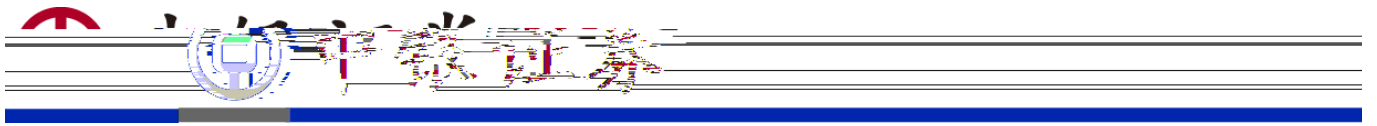


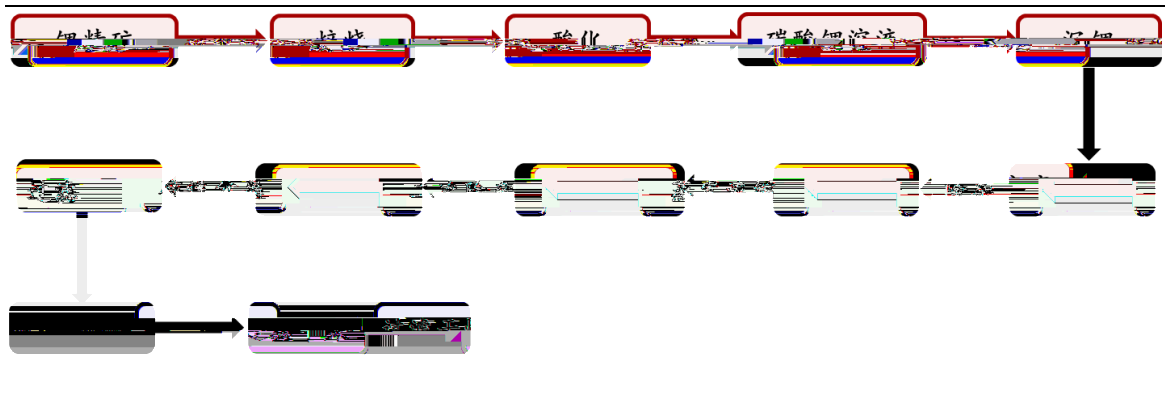
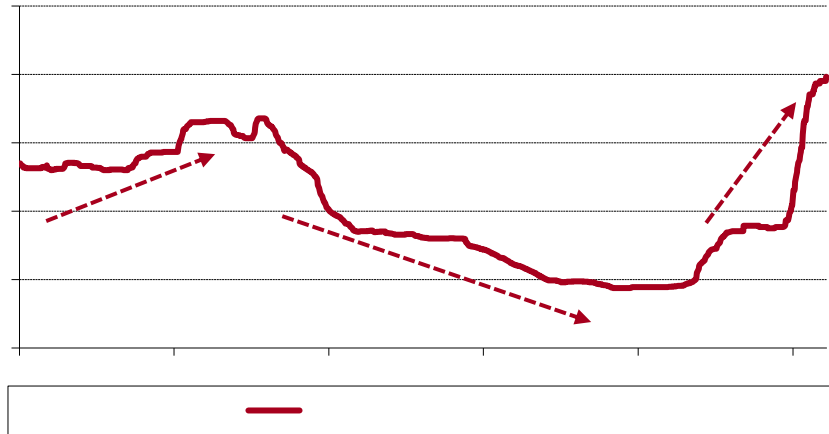


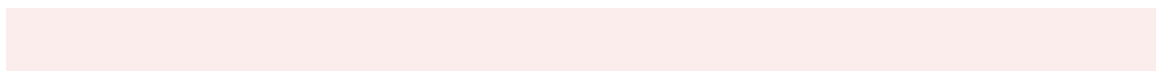
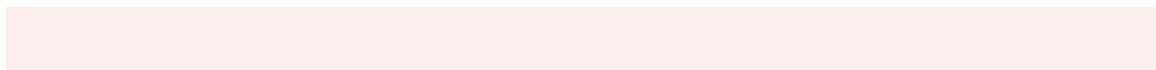
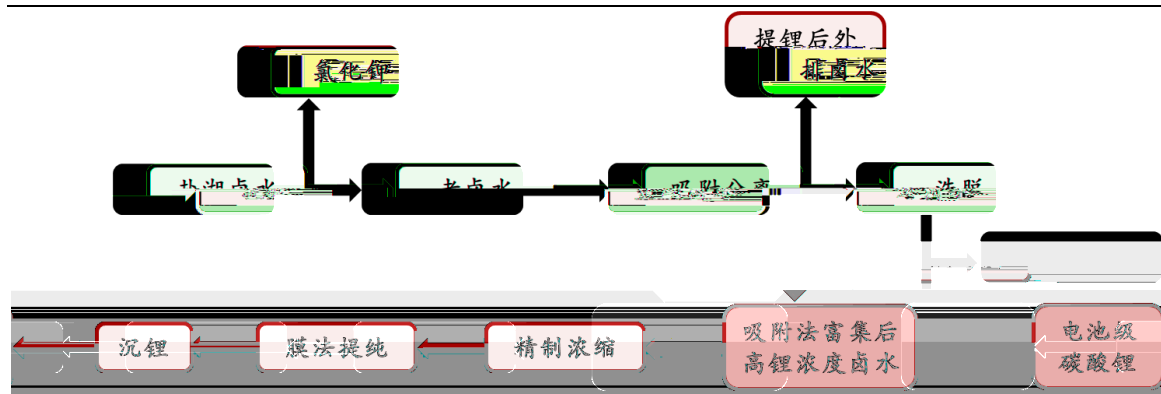
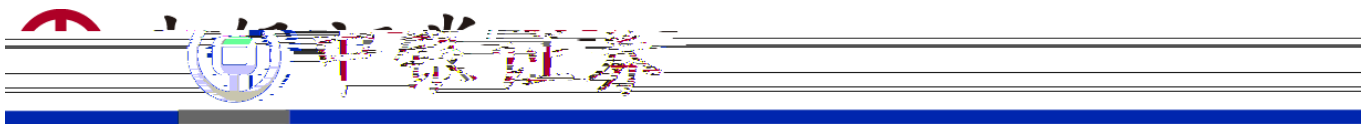


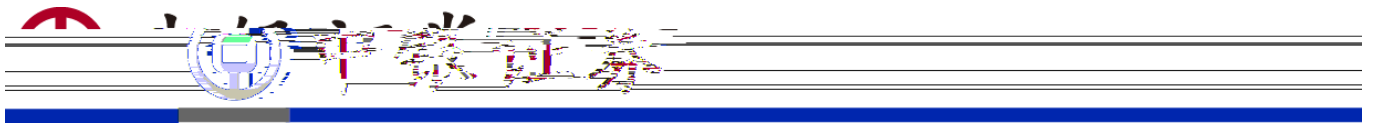


Horizontal lines for text input.





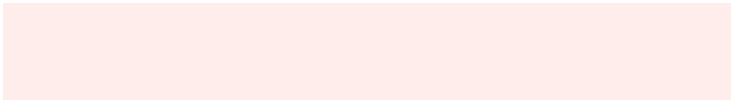
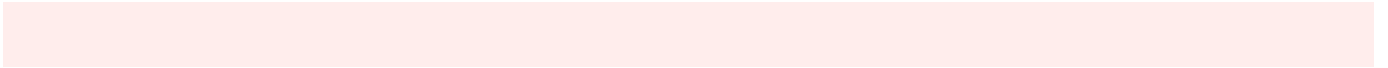
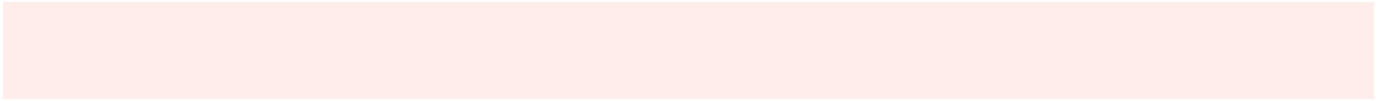
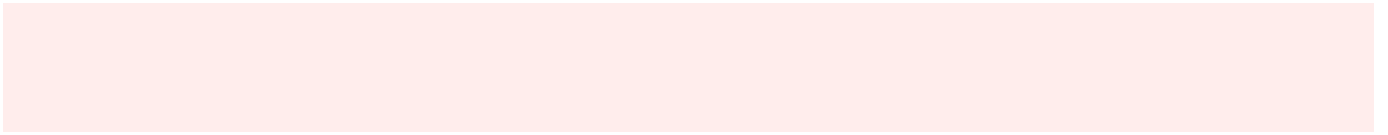
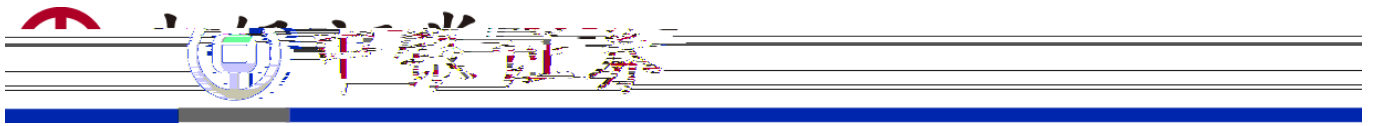


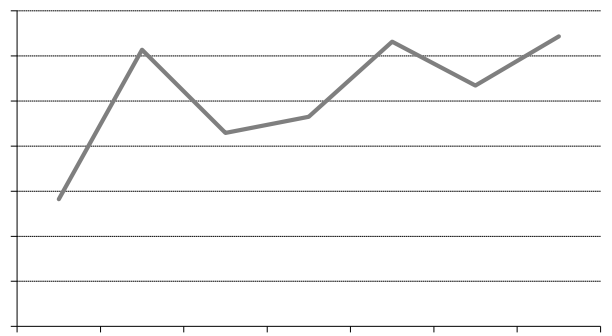
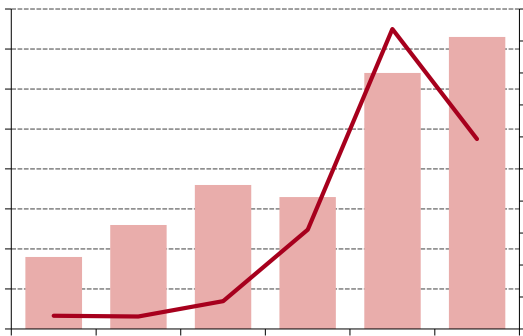


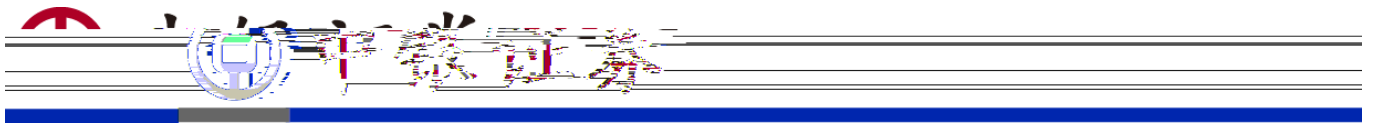
--	--

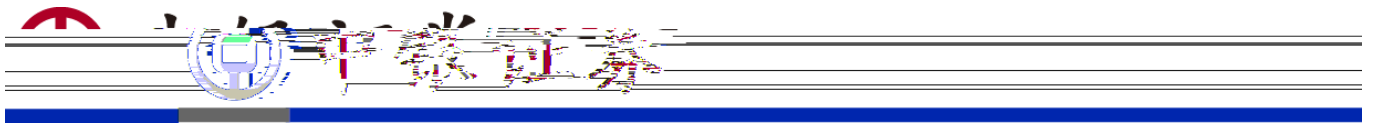
--	--

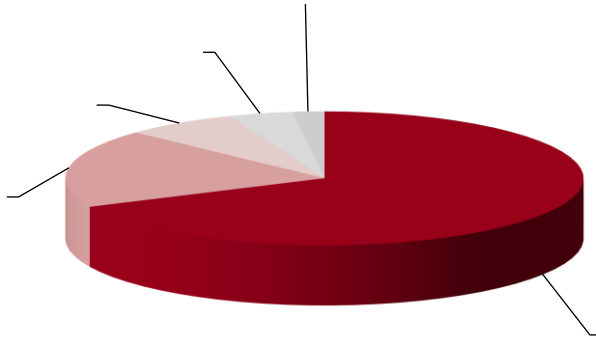
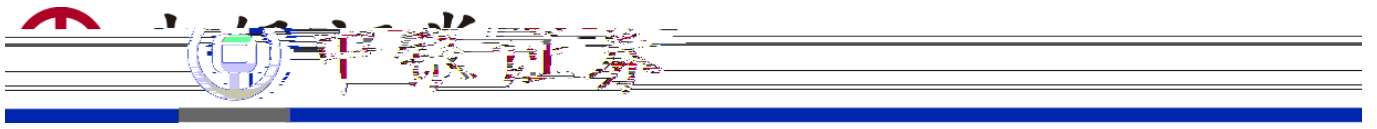
--	--

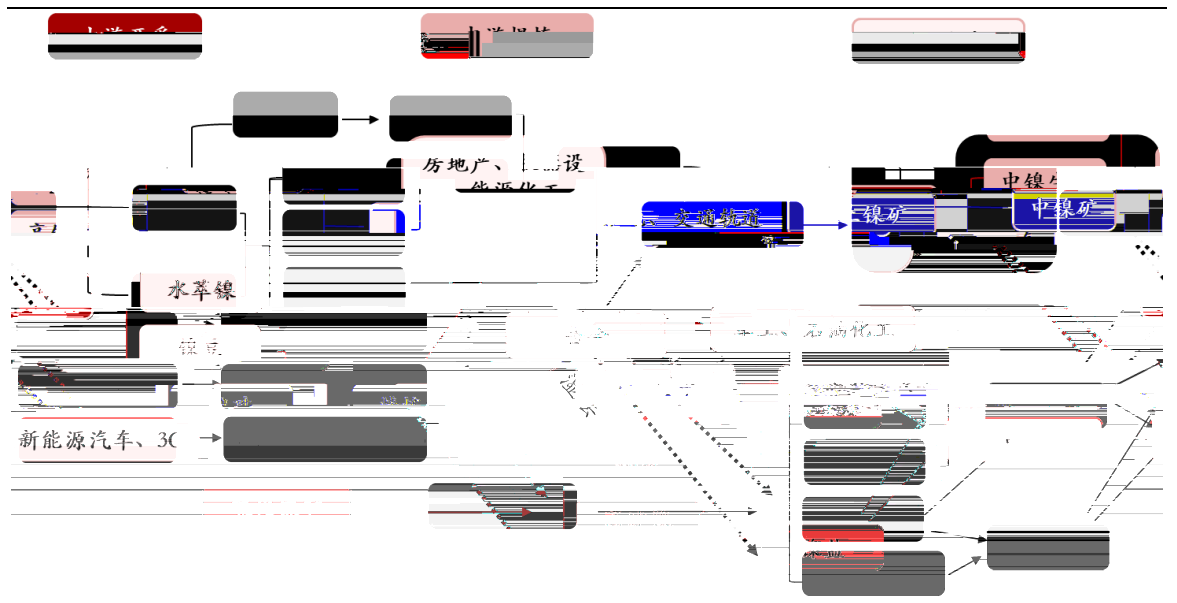
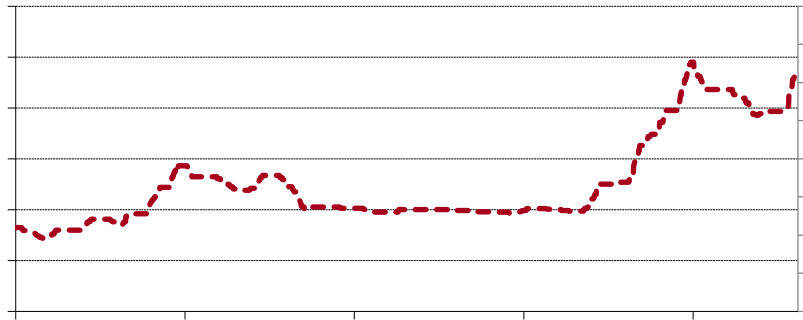


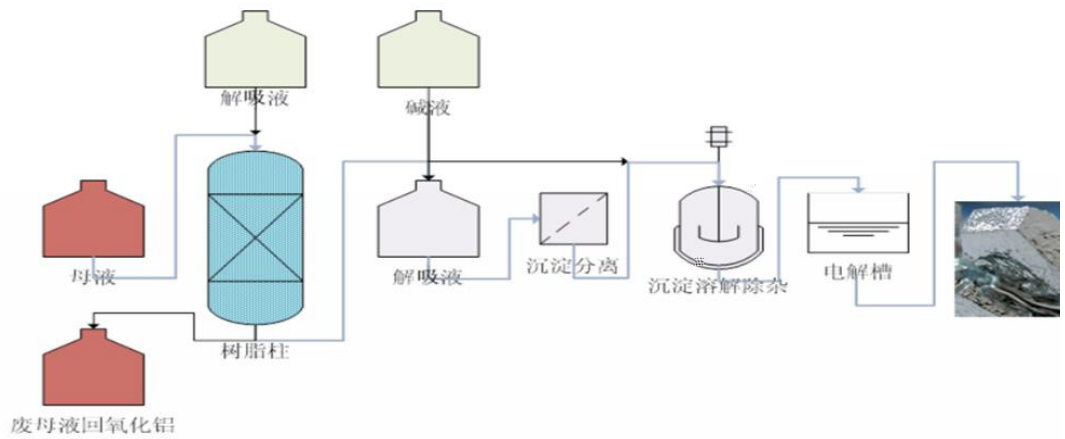
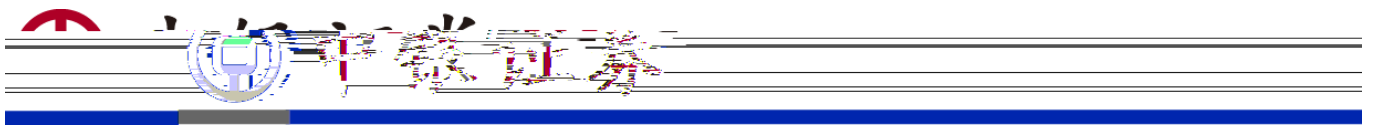


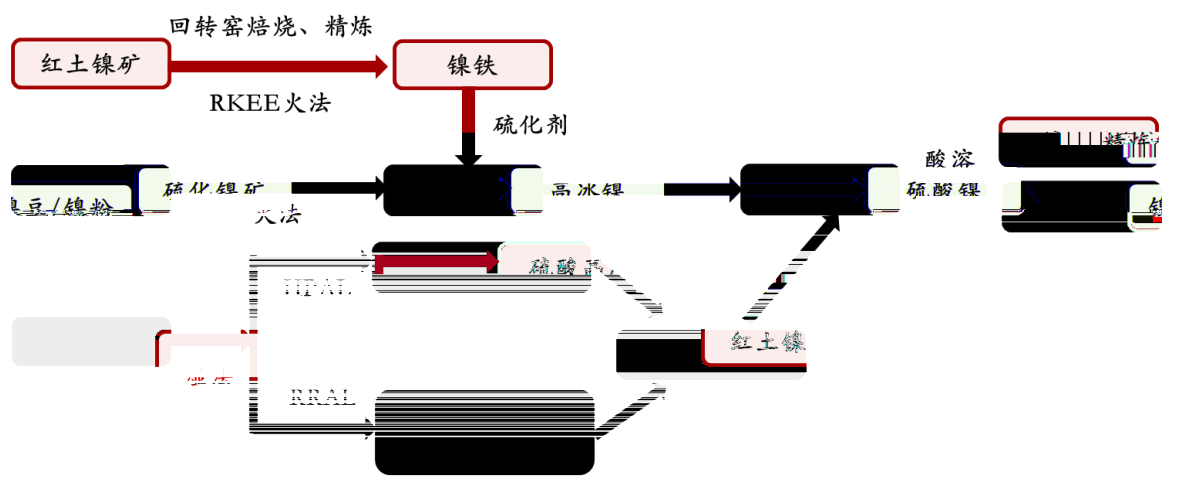
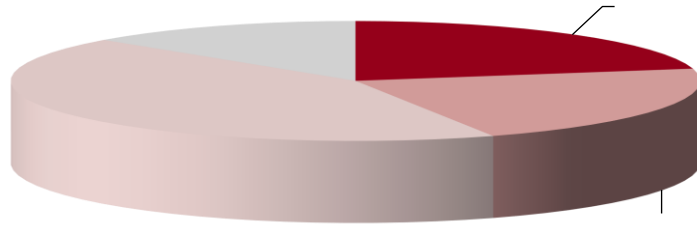
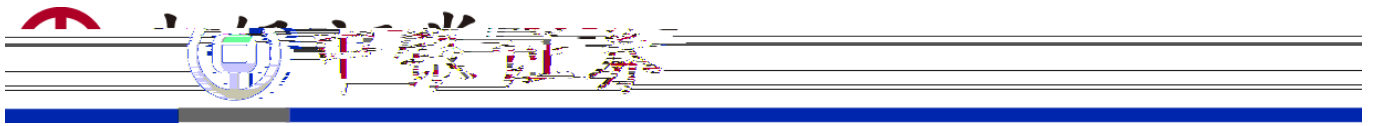


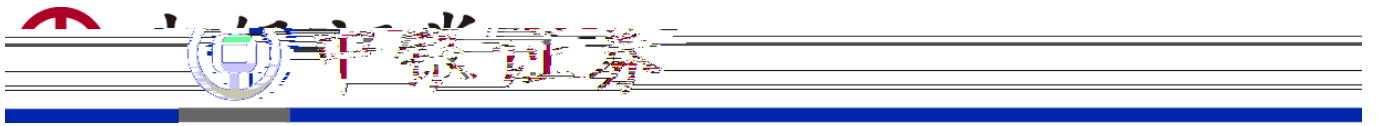












Blank white space for text.

Light pink horizontal bar.

Blank white space for text.

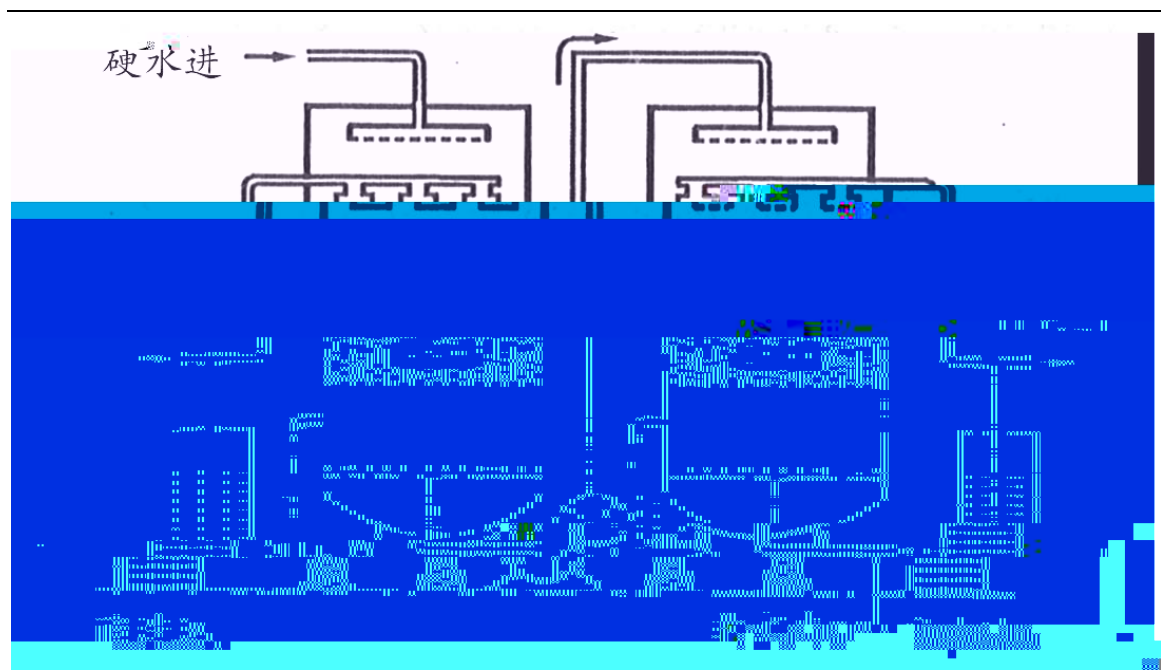
Light pink horizontal bar.

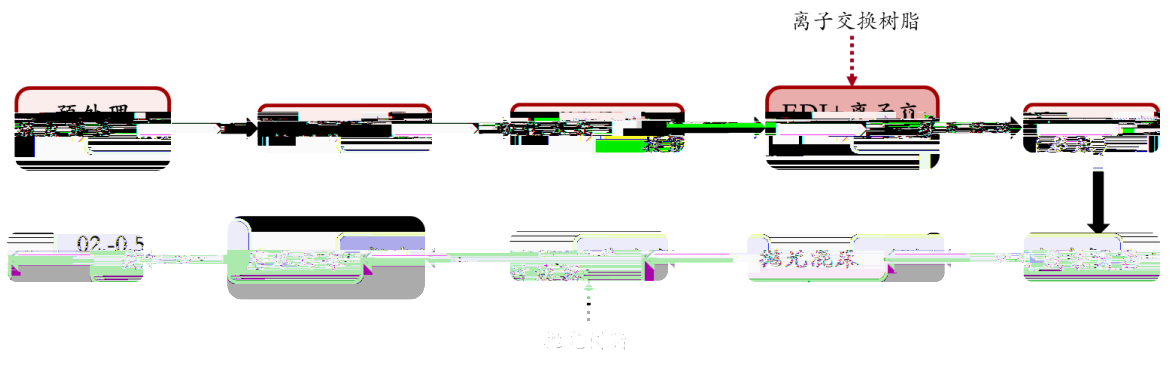
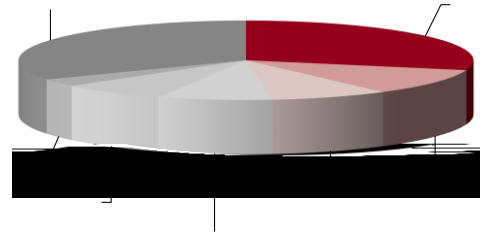
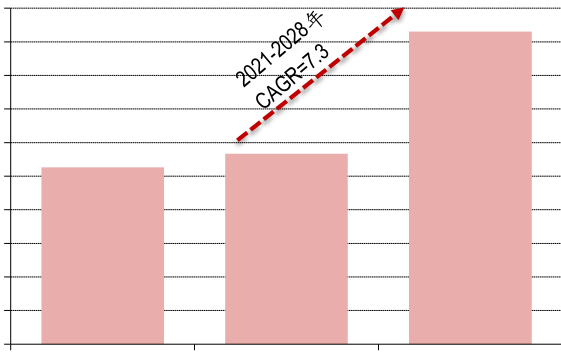
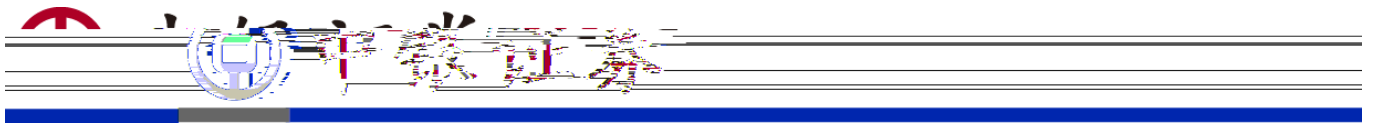
Light pink horizontal bar.

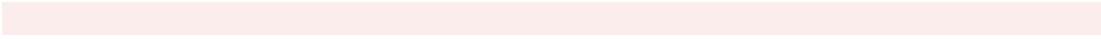
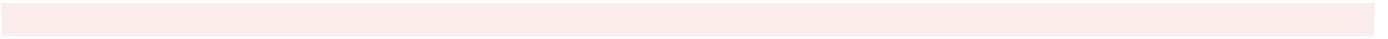
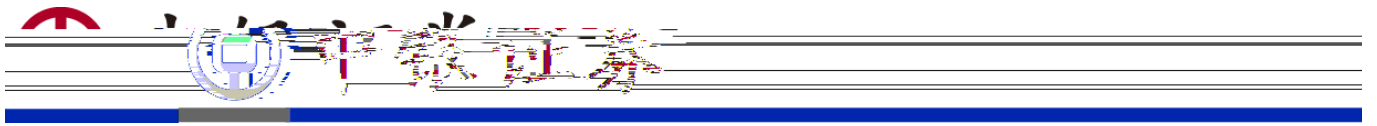
Light pink horizontal bar.

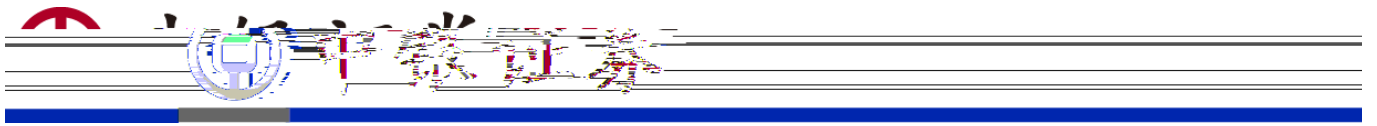
Blank white space for text.

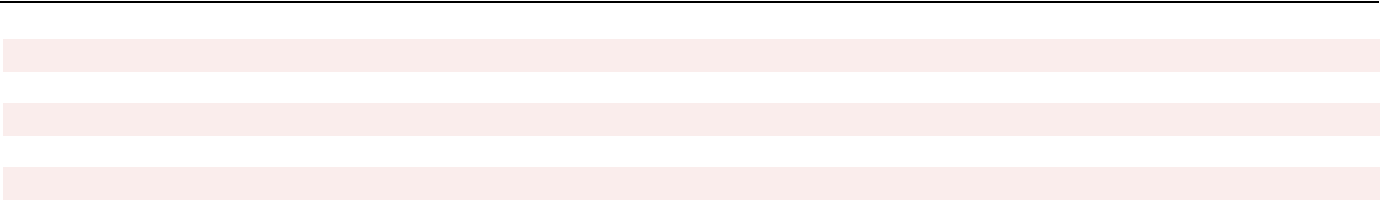
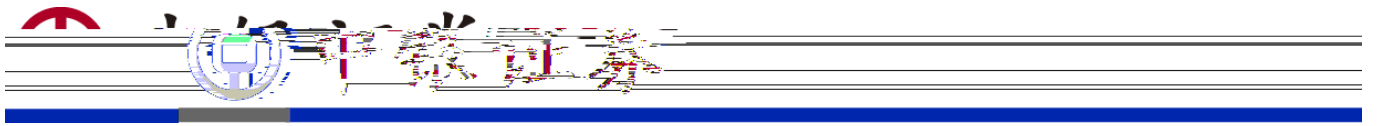
Large light pink rectangular block.

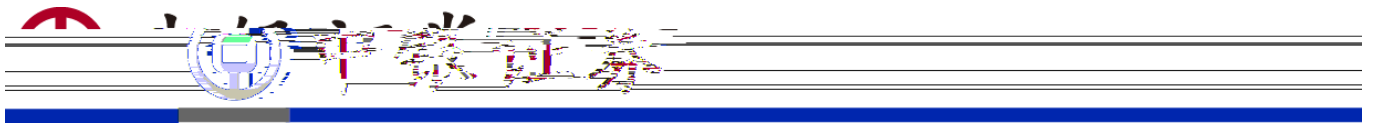




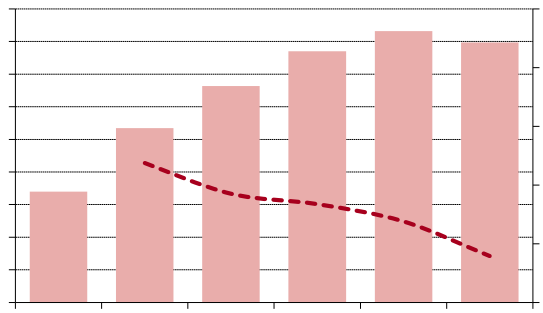
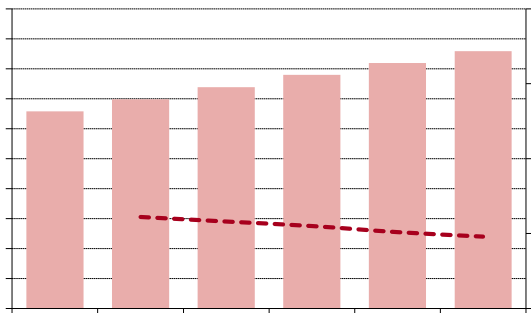
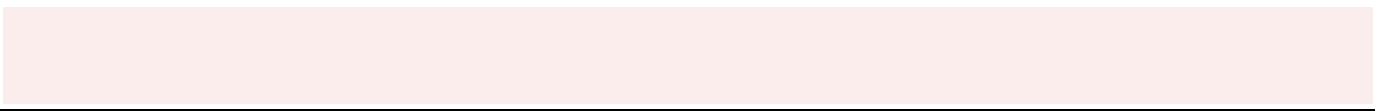
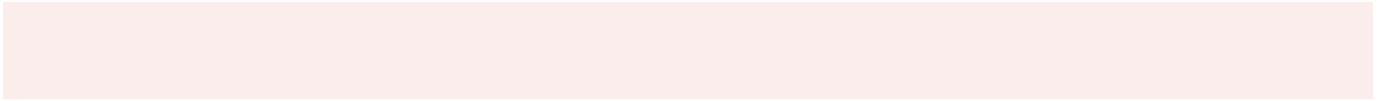
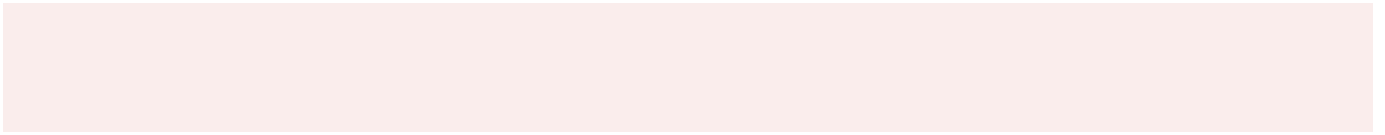
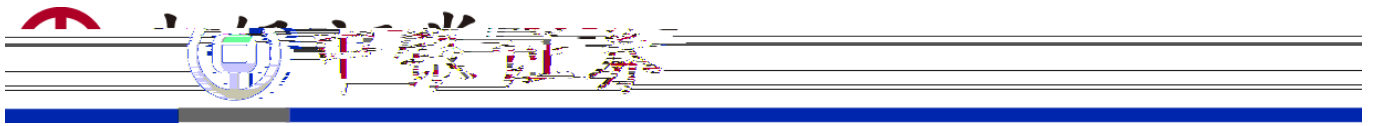


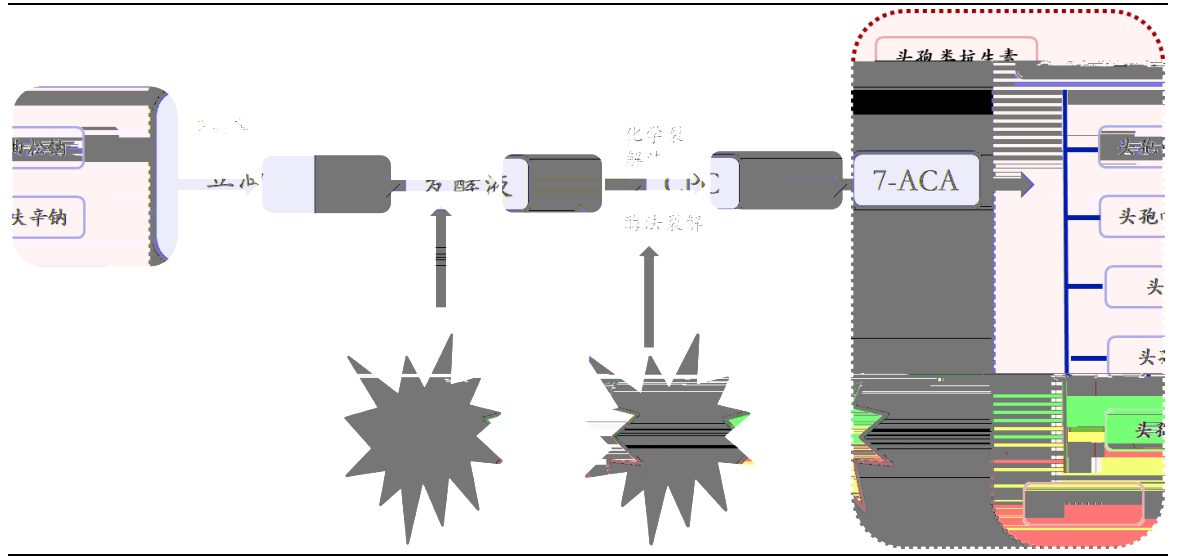
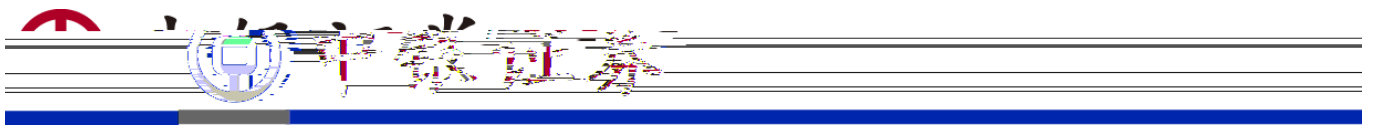




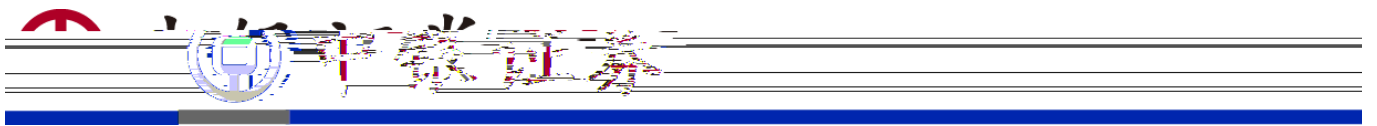


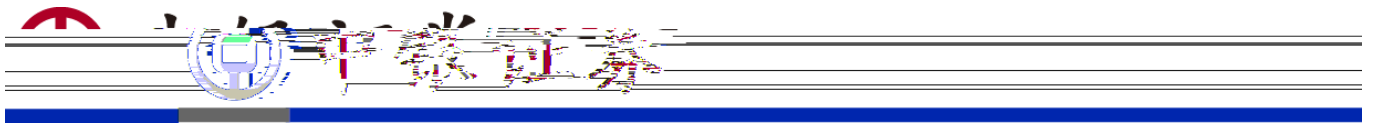
Four horizontal pink bars stacked vertically, serving as a form or placeholder for text.

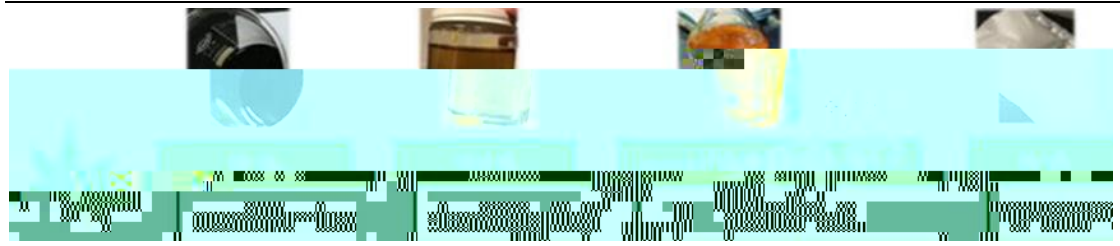
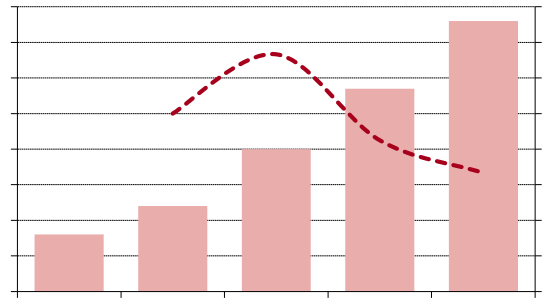
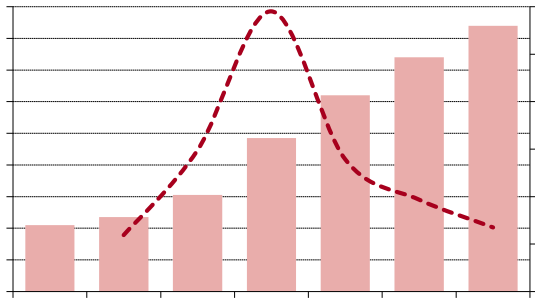
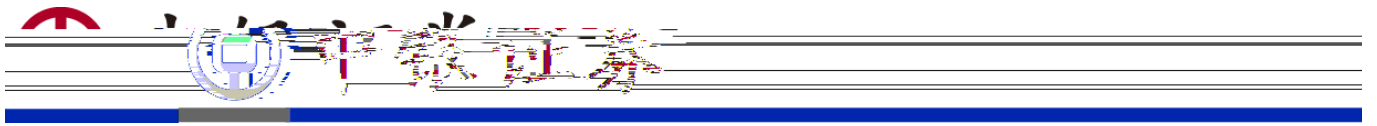


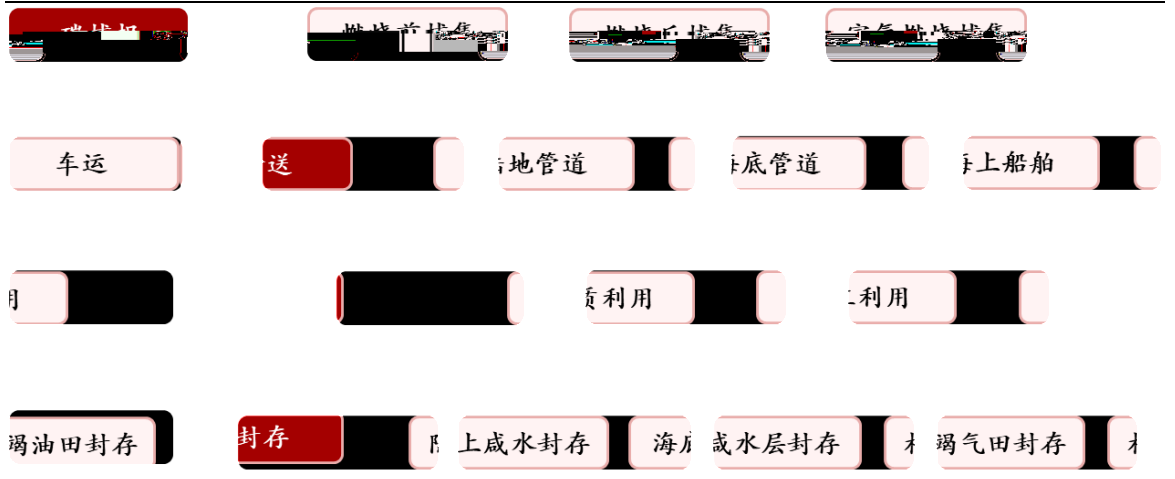
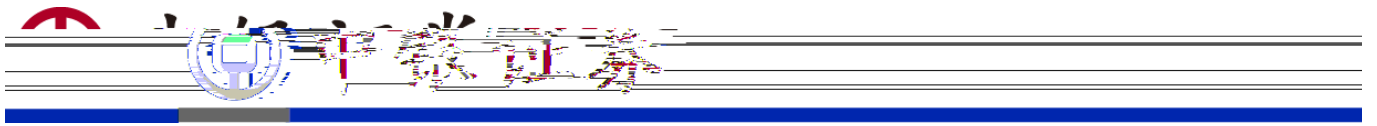


CBD

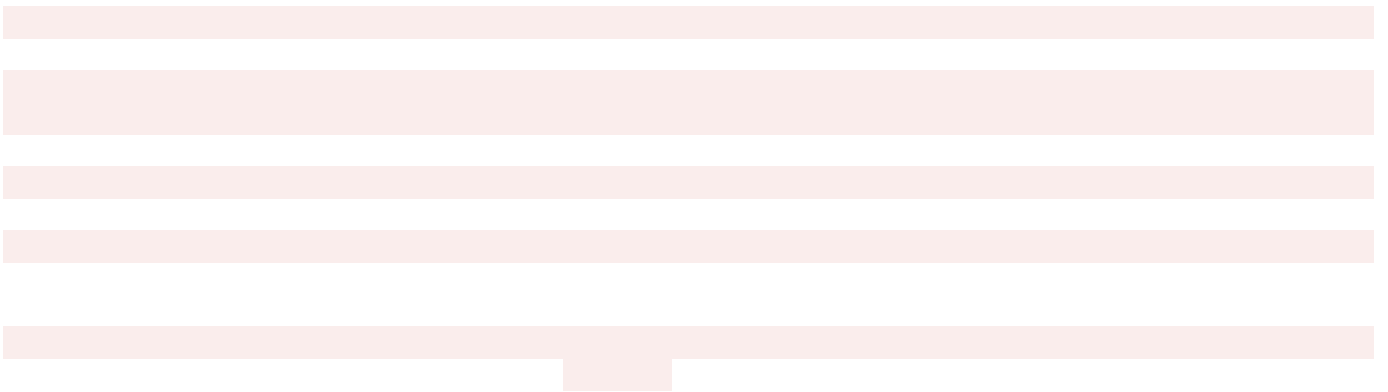
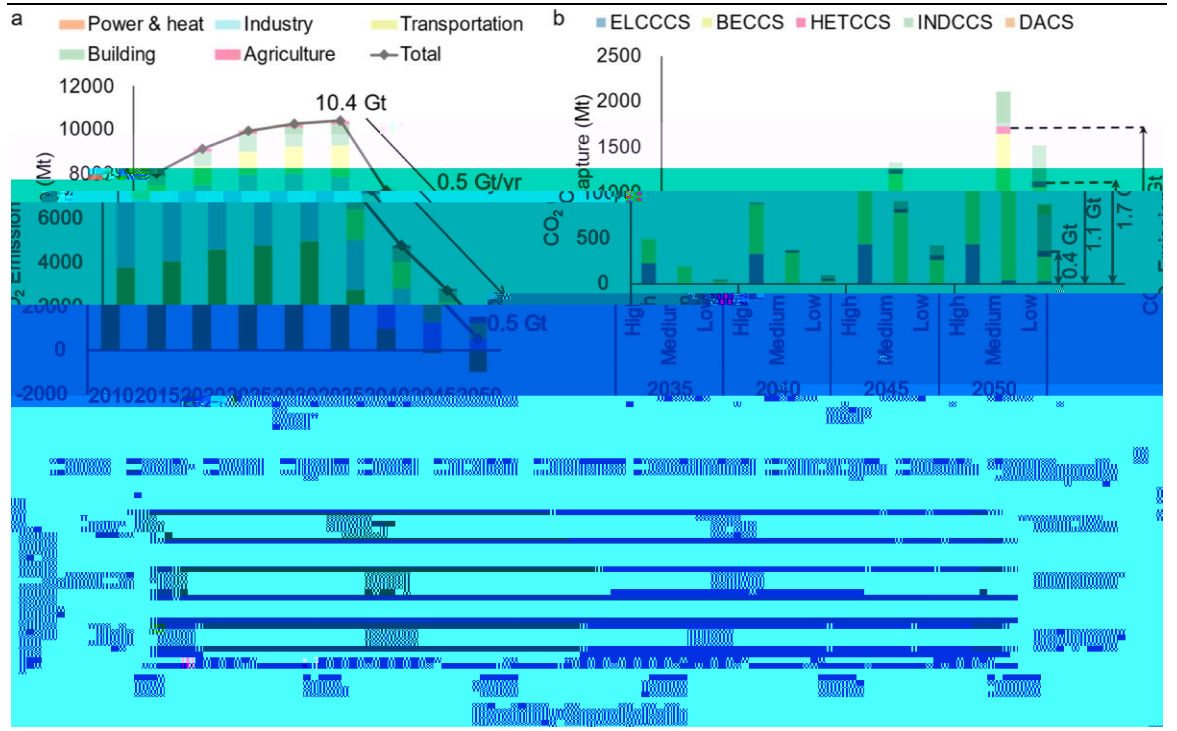
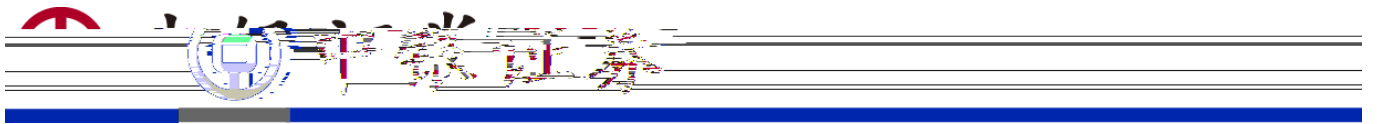




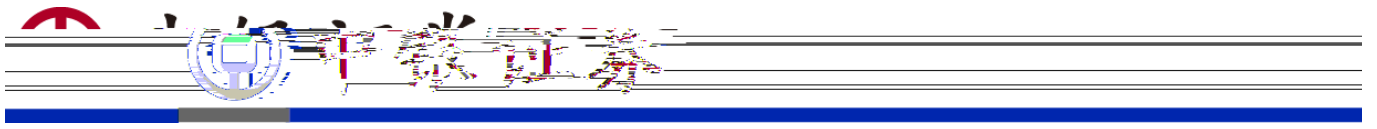




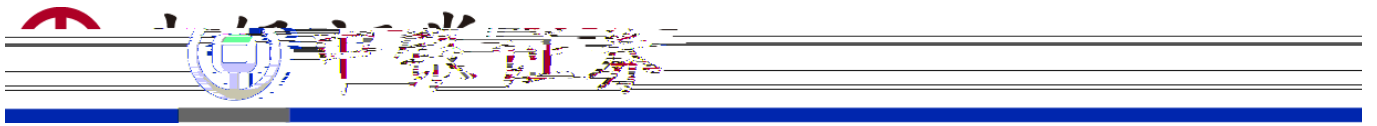
CCUS

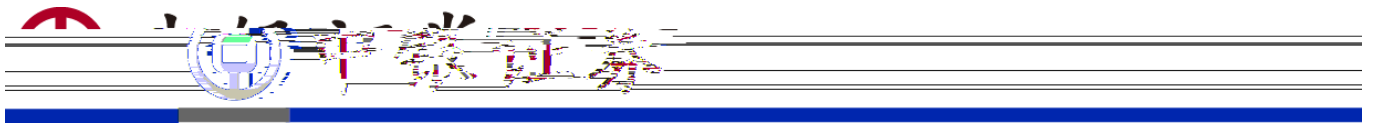






Four horizontal light pink rectangular boxes stacked vertically, intended for text input.





()

()

